

Womens Oversized Hoodie

item number 252.41

Description

370 g/m²

87% cotton, organic, 13% polyester, recycled

Style by H&M Group

Single needle stitch at neck

hood

sleeve rib & bottom hem rib

straddle stitch at armhole

flatlock seam at back hood

chain stitch felled shoulder seam

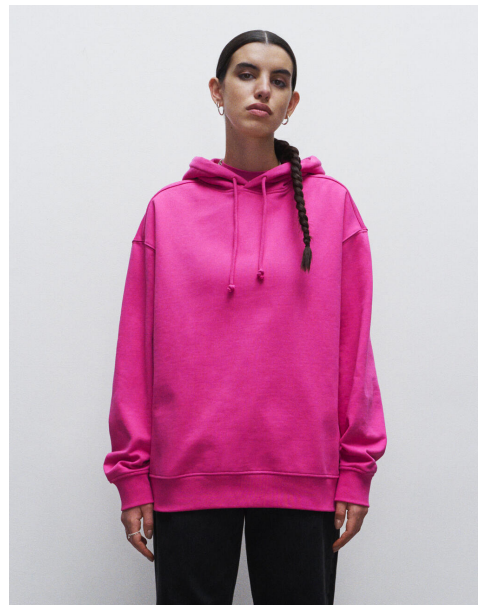
inside neck tape

1X1 rib double fabric hood

round drawstrings

half-moon back patch

Handfeel: Dry heavy weight



colors



Sizes

